



PHOENIX AUTOMATION

A COMPLETE ELECTRICAL AND INDUSTRIAL AUTOMATION SOLUTION PROVIDER



Contact : +91-6304908577 / 8179479718

Mail Id : sales@phoenixautomation.co.in

Website : www.phoenixautomation.co.in

Office Address: Flat No. 203, 2nd Floor, Sai Ram Avenue, New Samathapuri Colony, Nagole, Hyderabad. - 500 035, TS.

ABOUT US

M/S Phoenix Automation is one of the leading Electrical Panel manufacturers and Industrial Process Automation Solution providers in Southern India established in the year 2019.

As our company vision reflects in our profession to "**Value the Customer's Time and Money**". Our clients & vendors appreciate our work standards due to our nature of never compromising on quality and standards in our profession. It's one of the key factors that keep us on the front line. Our mission is to focus on providing more reliable, accurate, efficient, and cost-effective solutions to our customers in all Industrial segments based on their applications which always help them to enhance Productivity.

We are having expertise in handling turnkey projects successfully (from design to commissioning and testing). We have an experienced team in executing projects in different industrial sectors like Pharma, Defence, Food & Beverages, Gypsum, Oil & Gas, Glass, Power, Cement, Textile, Water and waste water Treatment & Dairy etc.,

OUR KEY FEATURES

- **Application:** Understanding our customer requirements and Process Flow Sequence accurately.
- **Design:** We provide Project Engineering Designs, Architectural Plans & SLDs as per industrial standards.
- **Drawings:** Easy & understandable Electrical GI and Schematic Drawings using Eplan & Auto CAD.
- **Product:** We manufacture and supply a wide range of **Electrical Panels** of MS, SS, and FLP like **HT, LT and fire Panels** with high quality, which offer reliable, safe, and efficient power distribution and **Control Panels** offer superior supervisory control over whole project/process level as per process quality requirement.
- **Quality:** High-quality reputed materials with industrial standards are used in Panel fabrication and building so that they can sustain HV & LV circumstances like voltage fluctuations, short-circuits, overload, earth leakages, lightning arrester, over & under voltage etc.,
- **Installation:** Site Erection services are done with an experienced installation team with proper equipment along with safety precautions.
- **Testing & Commissioning:** Site testing & commissioning activities are taken care by our experienced engineering team with a testing & commissioning checklist & documentation.
- **Reports:** Designing Data Analysing, Safety, Process Alarms, and Audit Reports helps customers ensure and enhance productivity, efficiency, and safety.
- **Delivery:** Promising on-time project delivery as per the assigned schedule.
- **Support & AMC:** We provide after-sales, service support online or offline, and Annual Maintenance Contract services.
- **Validations:** We also do IQ, OQ & PQ validation jobs for electrical and Automation processes.
- **Service:** In-house and Site commissioning Teams for smooth workflow without any interruption.

SECTORS WE SERVE



Pharma Industry



F & B Industry



Gypsum Industry



Packaging Industry

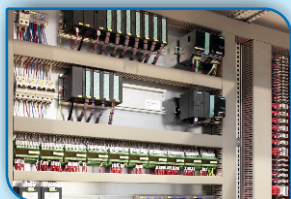


Water & Waste Water Industry

OUR SERVICES

- Site Erection works of all **Electrical HT & LT Panels** (HT-Kiosk, PCC, MCC, APFC, PDB, Fire Panel, Lighting Panel, Changeover Panels, etc.,) and **Control Panels** (PLC Panels, VFD Panels, Control Desks, etc.,).
- **Software Development:** PLC Programming, HMI & SCADA Development for 21CFR Part 11 projects, Communicating third-party controllers & software with standard Industrial Protocols like PROFIBUS, PROFINET, Modbus TCP, Modbus RTU, OPC and Fieldbus, etc.,
- IOT-based Gateway Configuring for remote monitoring & control for plant/machine level.
- Field Tray and Cable Laying works along with HT, LT, and Control terminations as per the provided Electrical Schematic Drawings at the site.
- VFD and Field Instruments installation along with configurations at the site as per technical Specifications.
- We do calibration jobs of field instruments with calibration certificates.
- We supply skilled Technical Manpower for commissioning, supervising, AMC, and installation works.

PRODUCTS WE DEAL



PLC Panel



SCADA System



VFD & Servo Panel



PCC Panel



MCC Panel



Fire Panel



LT Kiosk Panel



Control Desk



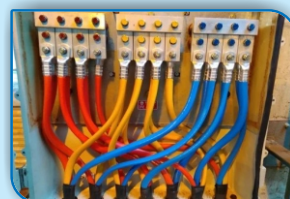
Cables & Tray Laying



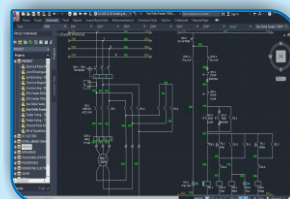
HT Terminations



APFC Panel



LT Terminations



CAD Design



Switchgear



Field Instruments

OUR MAJOR CLIENTS

TATA COFFEE



DYNA BIOTECH
TECHNOLOGY FOR CLIENTS

BHARAT
BIOTECH

Gypelite
INDIA PRIVATE LIMITED

Brilliant
BIO PHARMA

GYPMART

Maximius
EQUIPMENTS

サンザイム
Sanzyme
Biologics®

भारत इलेक्ट्रॉनिक्स
BHARAT ELECTRONICS

RICHCORE
www.richcoreindia.com



Vivimed



Biovet
Innovations for Animal Health Care

Inorbit
Come Live an Inorbit Experience

BRANDS WE DEAL

SIEMENS **DELTA** **Allen-Bradley**

Schneider Electric **ABB** **invvt** **Nidec**
CONTROL TECHNIQUES™

MITSUBISHI



WIKAI

Baumer **connectwell**
Passion for Sensors THE RIGHT CONNECTION



PHOENIX AUTOMATION

A COMPLETE ELECTRICAL AND INDUSTRIAL AUTOMATION SOLUTION PROVIDER

Contact : +91-6304908577 / 8179479718

Mail Id : sales@phoenixautomation.co.in

Website : www.phoenixautomation.co.in

Office Address: Flat No. 203, 2nd Floor, Sai Ram Avenue, New Samathapuri Colony, Nagole, Hyderabad. - 500 035, TS.